



Roland DGA Corporation

Product Information Guide

Texart™ RT-640 Dye Sublimation Printer



Contents

Need to Know	2
Key Features and Benefits	3-7
Competitive Snapshot	8
Specifications	9-10

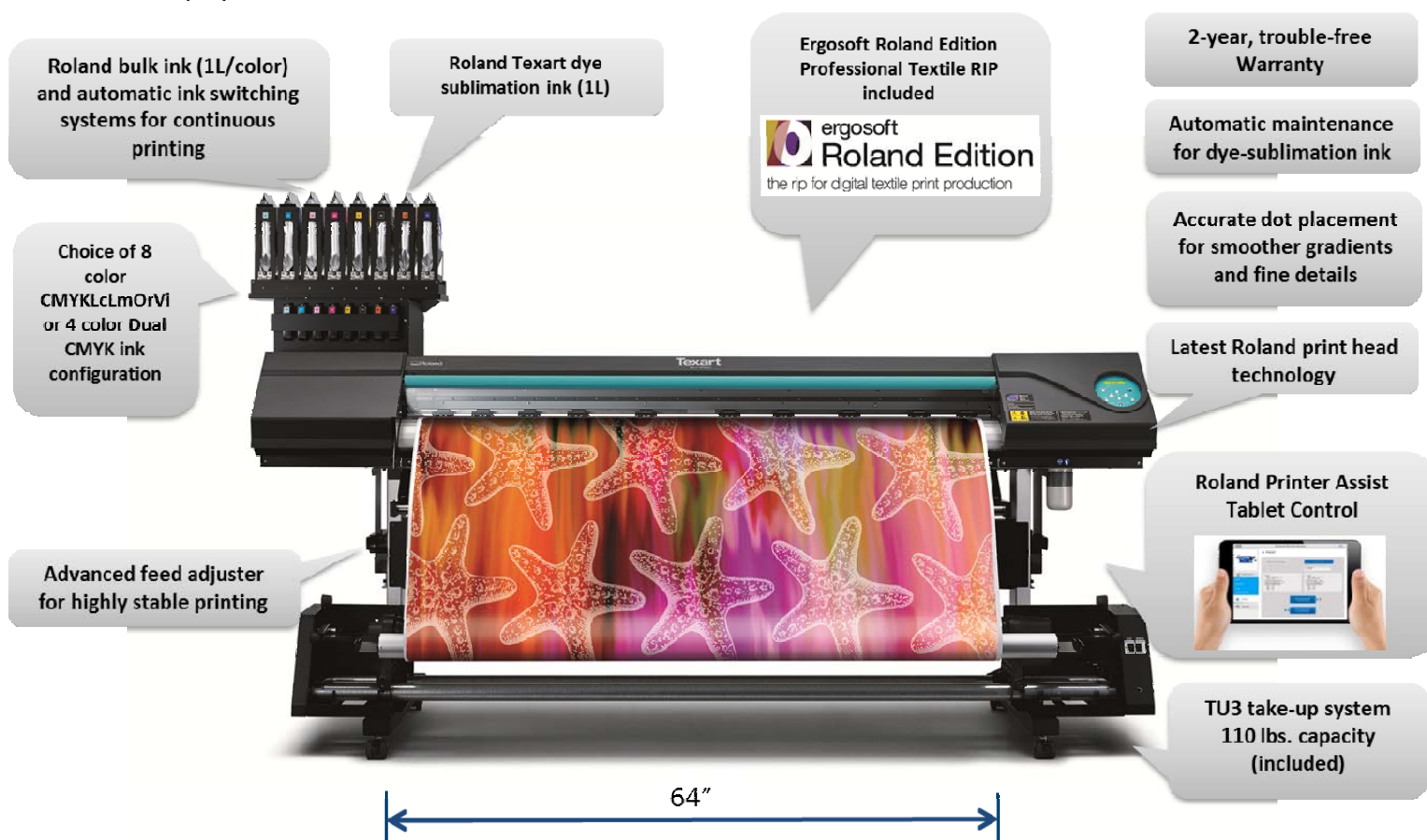
Roland Texart RT-640 – What You Need to Know

The innovative new Texart RT-640 wide-format printer is Roland's integrated dye-sublimation solution. Designed and built with textile customers in mind, the RT-640 combines premium hardware and advanced software technologies to meet specific dye-sublimation requirements, which differ from eco-solvent needs. The continued trends of decreased production run length, coupled with increased demand for customization and a variety of designs, will fuel the sales of dye-sublimation printers. New digital textile printing machines incorporating technologies that optimize productivity and efficiency, such as the RT-640, will entice customers to replace their older, less reliable models. Target markets and applications for the RT-640 include sports apparel, soft signage and exhibits, interior décor, apparel, and customized promotional goods.

True to its Roland brand, this user-friendly transfer dye-sublimation printer delivers outstanding image quality, long production runs and top-class productivity. The RT-640 will be positioned as a premium offering vs. the Mutoh (VJ-1624), Mimaki (JV33-160) and Epson (SC-F7170) in the "under \$20,000" dye-sublimation market.

MSRP: US \$19,995.00

Take-up system included



Key Features and Benefits

Excellent Print Quality

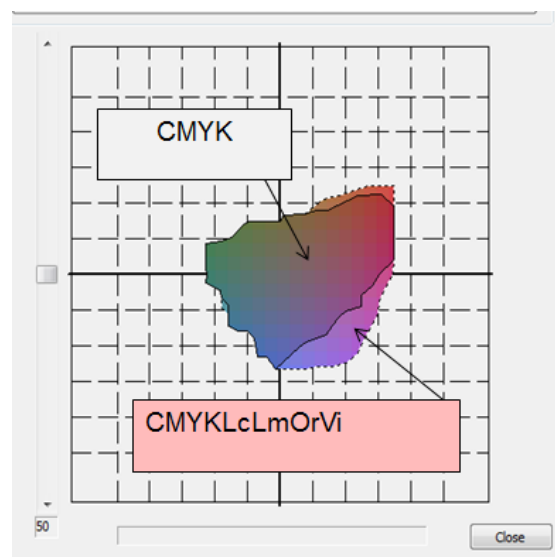
The RT-640 boasts an advanced eight-channel Piezo inkjet print head that contains 180 nozzles per channel, ensuring outstanding image quality. With seven different dot sizes available, the RT-640 achieves smoother gradations and richer density for photographic and high-resolution vector output.



Seven different sizes of droplets

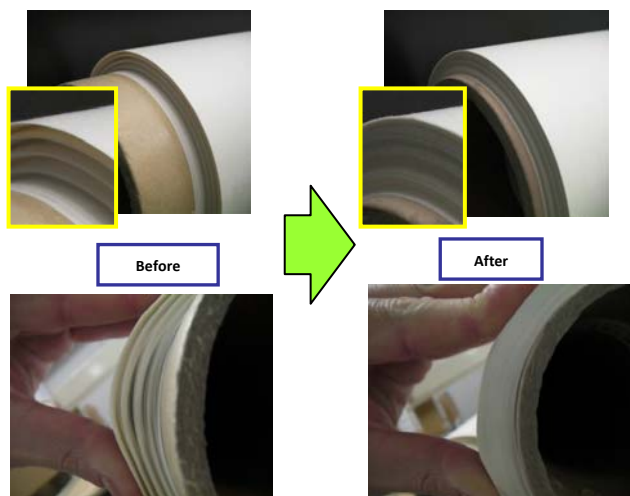
NEW! Texart SBL3 Inks

The RT-640 can be configured as a four-color or eight-color printer. When equipped with an eight-color configuration (CMYKLcLmOrVi), the use of orange and violet ink delivers a wide range of color gamut, including a bright and clear orange as well as an expanded blue-purple color range. Texart SBL3-BK ink yields deep black color and produces high quality, detailed output. You can expect stunning prints with vivid colors, deep black, smooth gradations and excellent detail.



New! Feed Adjuster for Stable Printing

The RT-640 has a newly-designed feed adjuster at the front and back of the printer. This helps prevent the transfer paper from skewing from side-to-side during printing and allows for an evenly tensioned and precisely wound roll at the take-up reel. Workflow efficiency is increased as you proceed to the next step in the process – moving the printed paper to the calendar/rotary heat press.



NEW! Bulk Ink System

The RT-640 features an advanced, integrated Roland Bulk Ink System, which ensures stable, uninterrupted printing. Unlike other bulk ink systems, the clean, air-tight design prevents the ink from exposure to air and other contaminants. This tight seal helps prevent leaks, while also maintaining even pressure as the ink is delivered to the print head. Each pouch feeds into an individual ink reservoir cartridge that then feeds into the ink lines. This air-tight design and cartridge reservoir system allows you to easily change an empty ink pouch during the printing process when printing in four-color mode. The Roland Ink System holds eight ink pouches, each containing 1L per color. When configured with dual CMYK, the system holds a maximum of 2L per color.



NEW! Automatic Ink Switching System

When configured in four-color mode, the RT-640 is capable of continuous printing with Roland's proprietary Ink Switching System. When the primary ink reservoir cartridge for a particular color runs out, its backup begins supplying ink automatically for maximum productivity and flawless results. To avoid any issues during the printing process, customers must make sure that both pouches for any specific color do not become empty. It is best practice to replace the empty ink pouch before the secondary pouch becomes empty to ensure proper ink levels.



New! ErgoSoft Roland Edition RIP Software

ErgoSoft is well known in the textile and dye sublimation market as the premier RIP solution for digital textile production. The Roland Edition of this software ensures optimum results from the RT-640 in both four- and eight-color modes. Users can maximize both image quality and production speed by taking advantage of ErgoSoft's superior dithering methods. Highlights of this powerful, open-architecture color management system include:



- Custom Color Replacement
- Superior Color Management Technology
- Streamlined Workflow
- Production Control Utilities
- Consistent Quality Output
- Ink-Limit Controls
- Highest Color Accuracy
- Step and Repeat

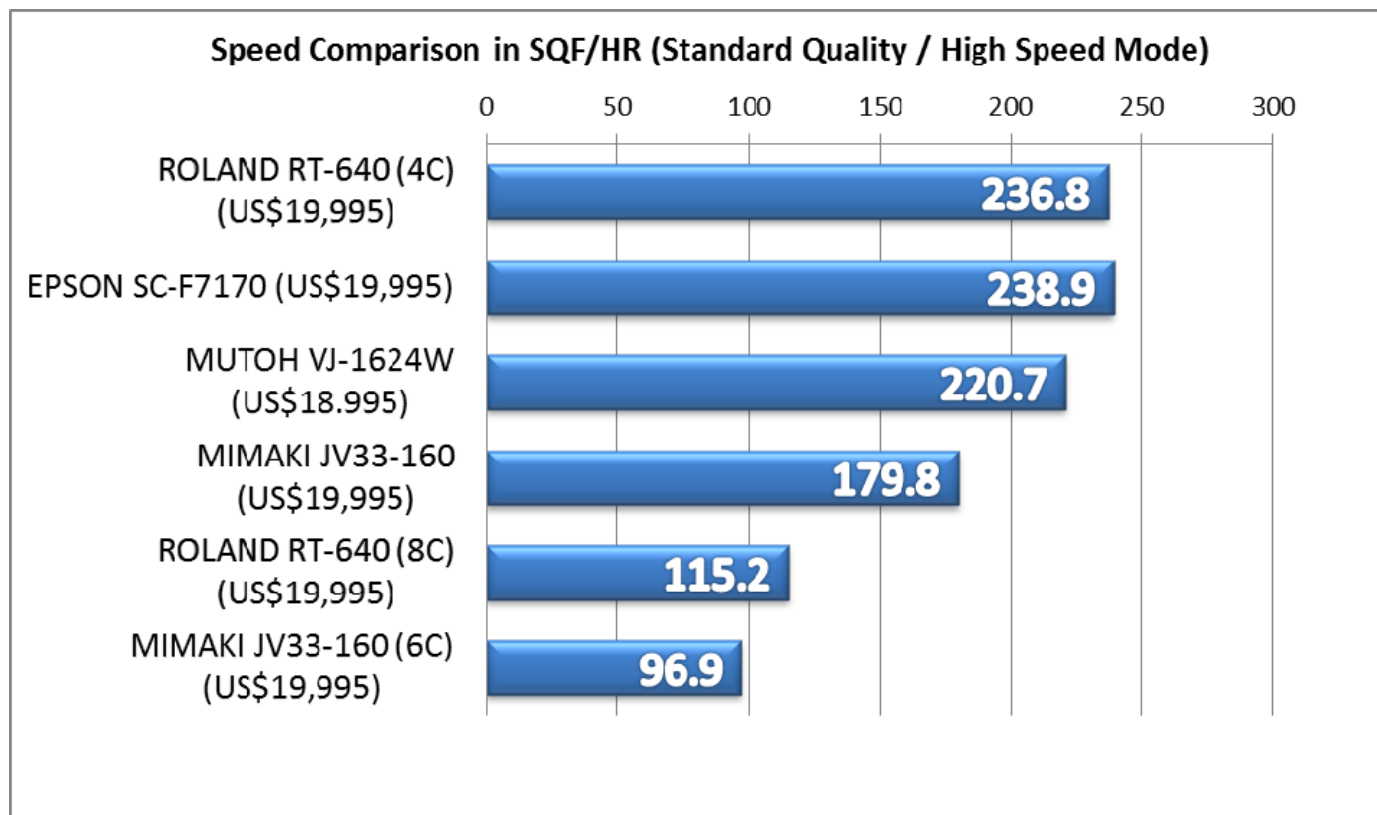
Print Mode and Speed

4-color

Profiles	Print Mode	Resolution (dpi)	Pass	Direction	Speed
Banner Satin Display Flag	MAX Speed	540 x 360	2	Bi	350.9 ft ² (32.5 m ²)
	High Speed	540 x 360	3	Bi	236.8 ft ² (21.9 m ²)
	Standard	360 x 720	4	Bi	172.2 ft ² (15.9 m ²)
	High Quality 1	720 x 720	8	Bi	86.1 ft ² (7.9 m ²)
	High Quality 2	720 x 1440	16	Bi	43 ft ² (3.9 m ²)

8-color

Profiles	Print Mode	Resolution (dpi)	Pass	Direction	Speed
Banner Satin Display Flag	MAX Speed	540 x 360	4	Bi	172.2 ft ² (15.9 m ²)
	High Speed	540 x 360	6	Bi	115.2 ft ² (10.7 m ²)
	Standard	360 x 720	8	Bi	86.1 ft ² (7.9 m ²)
	High Quality 1	720 x 720	12	Bi	58 ft ² (5.3 m ²)
	High Quality 2	720 x 1440	24	Bi	23.7 ft ² (2.2 m ²)

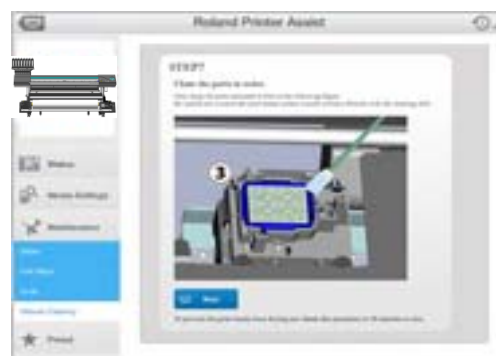


Roland Printer Assist Tablet Control

Roland Printer Assist (RPA) is a free application that makes it easy to manage your printer and access its control panel directly from your iPad. With RPA, your printer status can be determined at a glance. RPA is available at the iTunes App Store.

With RPA you can:

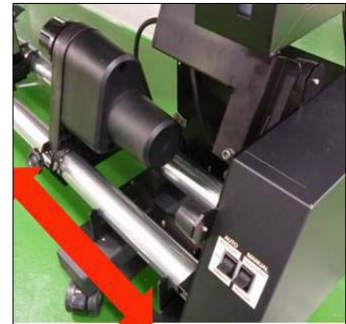
- Instantly see the amount of ink remaining and other key operating parameters, as well as waste bottle status.
- Remotely turn the printer on and off, check ink levels, view print status, perform calibration tests and make any necessary adjustments.
- Complete step-by-step navigation through maintenance processes and the changing of consumable parts with interactive instructions.
- Manage multiple printers from one iPad.



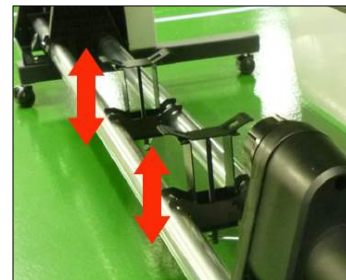
TU3 Take-up System

The RT-640's newly designed feed adjuster, combined with an included TU3 take-up system, facilitates precision unattended printing. The TU3 includes a convenient front-mounted take-up roller and an advanced tension-controlled take-up unit for superior media feeding and tracking.

- Supports roll media up to 110 lbs. (50 kg)
- New dancer roller applies light tension to the media for stable take up
- Dual shaft fixes the sliders firmly
- Adjustable take-up position for flexible paper core usage
- Support brackets for stable unloading/loading of media
- Roller releases the media automatically when the upper arrow key of the operation panel is pressed to rewind the media
- Select "TU" mode of SETUP menu to activate the TU3 operation
- Rotating shaft face decreases resistance for dramatic improvement in feeding accuracy
- Adjustable flanges allow for precise centering of smaller rolls



The sliders are adjustable.



The media can be placed on support bracket to be unloaded.

Two-Year Trouble-Free Warranty

Roland products combine unbeatable performance with legendary Roland reliability. As further proof of the unmatched reliability of this advanced printer, Roland offers an unprecedented Two-Year Trouble-Free Warranty for the Texart RT-640 when equipped exclusively with Roland Texart SBL3 inks and the printer is registered within 60 days of delivery.

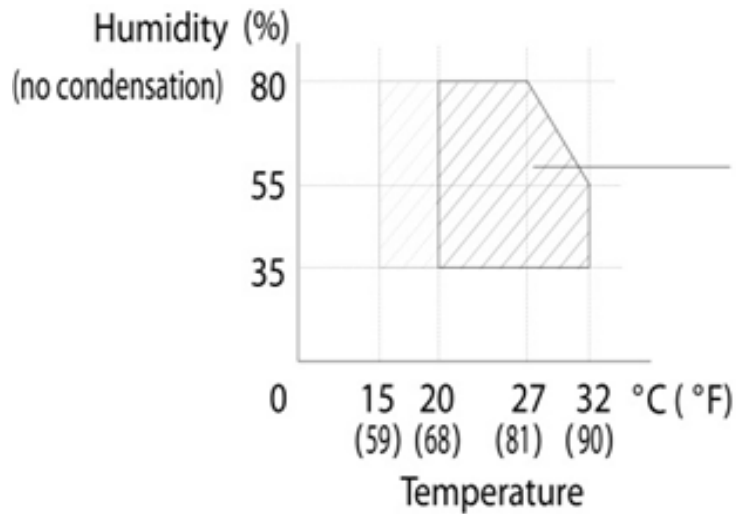


Competitive Snapshot

Competitive Machines	RT-640 Advantages
<p>Mimaki JV33-160</p>  <p>64-inch Print Only \$19,995 MSRP (\$11,495 - \$12,500 street price)</p>	<p>RT-640 is designed specifically for dye-sublimation.</p> <p>RT-640 has an integrated bulk ink system (Mimaki offers one as an option).</p> <p>RT-640 prints about 32 percent faster in high speed mode (four-color).</p> <p>RT-640 has twice the roll weight capacity (printer: 88lbs, TU3: 110 lbs.).</p> <p>ErgoSoft is a stronger textile RIP than RasterLink.</p> <p>RT-640 has a two-year warranty (Mimaki has a one-year limited warranty).</p>
<p>Epson SC-F7170</p>  <p>64-inch Print Only \$19,995 MSRP (\$18,395 street price)</p>	<p>ErgoSoft is a premium RIP in comparison to Wasatch.</p> <p>RT-640 has four- and eight-color print modes (Epson has four-color print mode only).</p> <p>RT-640 holds 2L per color in four-color print mode (Epson holds 1.5L per color).</p> <p>RT-640 has a two-year warranty (Epson has a one-year warranty).</p>
<p>Mutoh VJ- 1624W</p>  <p>64-inch Print Only \$18,995 MSRP (\$11,500 - \$12,500 street price)</p>	<p>RT-640 comes with ErgoSoft (Mutoh does not come with a Textile RIP).</p> <p>RT-640 has an integrated bulk ink system.</p> <p>RT-640 has four- and eight-color print modes (Mutoh has four-color print mode only).</p> <p>RT-640 has 40 percent higher roll weight capacity (printer: 88lbs, TU-3: 110 lbs.).</p> <p>RT-640 has a two-year warranty (Mutoh has a one-year warranty).</p>

Texart RT-640 Specifications		
Printing method		Piezo ink-jet method
Media	Width	Maximum 64 in. (1,625 mm)
	Thickness	Maximum 39 mil (1 mm)
	Roll outer diameter	Maximum 8.3 in. (210 mm)
	Roll weight	Maximum 88lbs (40 kg)
	Core diameter (*1)	3 in. (76.2 mm) or 2 in. (50.8 mm)
Printing width (*2)		Maximum 63.6 in. (1,615 mm)
Ink pouches	Types	SBL3 Texart dye-sublimation ink (1L / pouch)
	Colors	Four colors (cyan, magenta, yellow, black) Eight colors (cyan, magenta, yellow, black, light cyan, light magenta, orange, violet)
Printing resolution (dpi)		Maximum 1,440 dpi
Distance accuracy (*3)		Error of less than ± 0.3 % of distance traveled, or ± 0.3 mm, whichever is greater
Connectivity		Ethernet (10BASE-T/100BASE-TX automatic switching)
Power-saving function		Automatic sleep feature
Power requirements		AC100V to 240V $\pm 10\%$, 1.5A, 50/60Hz
Power consumption	During operation	Approx. 140 W
	Sleep mode	Approx. 30 W
Acoustic noise level	During operation	62 db(A) or less
	During stand by	49 db(A) or less
Exterior dimensions (with stand)		104.4 in. (W) x 31.3 in. (D) x 63 in. (H) (2,650 mm(W)×795 mm (D)×1,600 mm(H))
Weight (with stand)		353 lbs (160 kg)
Environmental	Power on (*4)	Temperature: 18°C to 25°C (64.4 to 77°F), Humidity: 35 to 65% RH (non-condensing)
	Not operating	Temperature: 5°C to 30°C (59 to 86 °F), Humidity: 20 to 80% RH (no condensation)
RIP software		ErgoSoft Roland Edition

Optimal Print Environment



Application software compatible with Printer

Adobe® Illustrator® 10, CS, CS2, CS3, CS4, CS5, CS6, CC

CorelDRAW® 11, 12, X3, X4, X5, X6, X7

*1 The media holder of this machine is exclusively for media with a paper tube core inner diameter of 3 inches. To use a 2-inch media core, please use the optionally available media flanges.

*2 The length of printing is subject to the limitations of the program.

*3 Media type: Media specified by Roland DGA, temperature: 25°C (77°F), humidity: 50%, Roll media must be loaded correctly, excluding expansion/contraction of the media, all corrections or adjustment function of this machine have been made properly, print travel: 1m

*4. Operating environment